

GE Healthcare

# Centricity\* RIS-IC and Centricity\* OneView Microsoft Internet Explorer Settings

10.8 UP10 Release  
DOC1720250  
Rev 1

Published—November 2015

Do not duplicate  
\*\*Trademark of General Electric Co.



# Copyright Information

## Confidentiality and Proprietary Rights

This document is the confidential property of GE and/or its affiliated entities. It is furnished to, and may only be used by, customers and their employees under a written agreement with GE and may only be used in accordance with the terms of that agreement. The access and use of this document is restricted to customers and their employees. The user of this document agrees to protect the confidentiality of the information contained herein and GE's proprietary rights as expressed herein and not permit access to this document by any person for any purpose other than as an aid in the use of the GE software. In no case may this document or any portion hereof be accessed, made available, examined, or copied for the purpose of developing, marketing, or supporting any system or computer program similar to the GE software. No part of this document may be copied without the prior written permission of GE. The information in this document is subject to change by GE without notice.

Inquiries regarding permission for use of material contained in this document should be addressed to:

GE Healthcare

ATTN: General Counsel, 540 West Northwest Highway, Barrington, IL 60010

## Trademarks

GE, the GE Monogram, and Centricity are trademarks of the General Electric Company. All third-party trademarks are the property of their respective owners.

## Copyright Notice

Copyright © 2015 General Electric Company. All rights reserved.



## Illustrations

All illustrations in this document are provided as examples only. Screens shown in this document do not necessarily reflect or emulate your exact patient data or the precise appearance of your screen.

In this document, all names appearing in examples and illustrations are fictitious. The use of any real person's name is purely coincidental.

## General Definition of Symbols

The following table defines symbols that appear in the product labeling.

Symbols	Definition
	This symbol indicates the MANUFACTURER of the product.
	This symbol indicates the DATE OF MANUFACTURE of the product.

## Third-Party Attribution – jQuery

Centricity RIS-IC uses a jQuery calendar control. jQuery is open-source software licensed under the MIT license.

Copyright 2015 jQuery Foundation and other contributors

<http://jquery.com/>

Permission is hereby granted, free of charge, to any person obtaining a copy of this software and associated documentation files (the "Software"), to deal in the Software without restriction,

including without limitation the rights to use, copy, modify, merge, publish, distribute, sublicense, and/or sell copies of the Software, and to permit persons to whom the Software is furnished to do so, subject to the following conditions:

The above copyright notice and this permission notice shall be included in all copies or substantial portions of the Software.

THE SOFTWARE IS PROVIDED "AS IS", WITHOUT WARRANTY OF ANY KIND, EXPRESS OR IMPLIED, INCLUDING BUT NOT LIMITED TO THE WARRANTIES OF MERCHANTABILITY, FITNESS FOR A PARTICULAR PURPOSE AND NONINFRINGEMENT. IN NO EVENT SHALL THE AUTHORS OR COPYRIGHT HOLDERS BE LIABLE FOR ANY CLAIM, DAMAGES OR OTHER LIABILITY, WHETHER IN AN ACTION OF CONTRACT, TORT OR OTHERWISE, ARISING FROM, OUT OF OR IN CONNECTION WITH THE SOFTWARE OR THE USE OR OTHER DEALINGS IN THE SOFTWARE.

### Third-Party Attribution – XStream

Centricity RIS-IC uses XStream. XStream is open-source software made available under a BSD license.

Copyright (c) 2003-2006, Joe Walnes

Copyright (c) 2006-2009, 2011 XStream Committers

All rights reserved.

Redistribution and use in source and binary forms, with or without modification, are permitted provided that the following conditions are met:

1. Redistributions of source code must retain the above copyright notice, this list of conditions and the following disclaimer.
2. Redistributions in binary form must reproduce the above copyright notice, this list of conditions and the following disclaimer in the documentation and/or other materials provided with the distribution.
3. Neither the name of XStream nor the names of its contributors may be used to endorse or promote products derived from this software without specific prior written permission.

THIS SOFTWARE IS PROVIDED BY THE COPYRIGHT HOLDERS AND CONTRIBUTORS "AS IS" AND ANY EXPRESS OR IMPLIED WARRANTIES, INCLUDING, BUT NOT LIMITED TO, THE IMPLIED WARRANTIES OF MERCHANTABILITY AND FITNESS FOR A PARTICULAR PURPOSE ARE DISCLAIMED. IN NO EVENT SHALL THE COPYRIGHT OWNER OR CONTRIBUTORS BE LIABLE FOR ANY DIRECT, INDIRECT, INCIDENTAL, SPECIAL, EXEMPLARY, OR CONSEQUENTIAL DAMAGES (INCLUDING, BUT NOT LIMITED TO, PROCUREMENT OF SUBSTITUTE GOODS OR SERVICES; LOSS OF USE, DATA, OR PROFITS; OR BUSINESS INTERRUPTION) HOWEVER CAUSED AND ON ANY THEORY OF LIABILITY, WHETHER IN CONTRACT, STRICT LIABILITY, OR TORT (INCLUDING NEGLIGENCE OR OTHERWISE) ARISING IN ANY WAY OUT OF THE USE OF THIS SOFTWARE, EVEN IF ADVISED OF THE POSSIBILITY OF SUCH DAMAGE.

# Contents

- 1 About this Guide ..... 5**
  - 1.1 Contacting GE Healthcare Support ..... 5
  - 1.2 About the Microsoft Internet Explorer Settings Guide ..... 5
  - 1.3 Revision History ..... 5
  
- 2 Safety ..... 6**
  - 2.1 Intended Use ..... 6
  - 2.2 Terminology ..... 7
  - 2.3 System Safety ..... 7
  - 2.4 Dangers ..... 8
  - 2.5 Warnings ..... 9
  - 2.6 Cautions ..... 11
  - 2.7 EMC: Immunity Performance ..... 11
  - 2.8 Certifications ..... 11
  
- 3 Internet Explorer (IE) 9 Settings ..... 12**
  - 3.1 Defining Browser Settings for IE 9 ..... 12
  - 3.2 Defining Security Settings in IE 9 ..... 13
  
- 4 Internet Explorer (IE) 11 Settings ..... 16**
  - 4.1 Defining Browser Settings for IE 11 ..... 16
  - 4.2 Defining Security Settings in IE 11 ..... 17

# 1

## About this Guide

### 1.1 Contacting GE Healthcare Support

You can report issues to the GE Healthcare Remote Operations Center 7 x 24 either by telephone or the Service Portal.

- Telephone (toll free): 855–762–6650
- Service Portal: <https://engage.gehealthcare.com/community/en/ris-ic>

### 1.2 About the Microsoft Internet Explorer Settings Guide

This guide contains information on defining Microsoft Internet Explorer (IE) settings for client PCs. GE Healthcare recommends using the Internet Explorer Administration Kit (IEAK) to allow administrators to set the IE settings without having to log in to each client PC. For more information about IEAK, refer to the following web page: <https://www.microsoft.com/technet/prodtechnol/ie/ieak/default.mspx>.

The system uses signed ActiveX controls that must be installed on a client PC. The controls can be downloaded or pushed to the client.

**Note**

- Only users defined in Windows as an “Administrator” or “Power User” are allowed to install controls.
- These instructions also address settings required for the Connectivity Module.

### 1.3 Revision History

Revision	Date	Comment
1	November 2015	First release for version 10.8 UP10.

# 2

## Safety

### 2.1 Intended Use

Centricity RIS-IC is intended to manage the administrative and clinical workflow of a radiology department—from a single organization to the complex needs of the integrated delivery network. This application is intended to manage a radiology department workflow (scheduling patients, exam room), tracking data (technologist productivity, mammography tracking) and creating, approving and distributing diagnostic reports (reporting). The Centricity RIS-IC product is intended to format data entered by the radiologist or technician into predetermined reports.

Certain modules for Centricity RIS-IC, such as the Nursing Care module, are intended to store, display and communicate patient data, including (but not limited to) radiological results, clinical and lab results, vital signs, medications, allergies, patient physiological status, aldrete scores, etc. There are no algorithms, clinical decision support tools, or diagnostic tools within Centricity RIS-IC.

The system can be used in a standalone facility or in a multi-facility setting with several radiology departments. Centricity RIS-IC is intended to be used as either a standalone RIS or in conjunction with PACS. Centricity RIS-IC is intended to interface with various Electronic Medical Record Systems (EMR), HIS, LIS, PACS, etc. Centricity RIS-IC is not intended for image storage, display, or communication.

Centricity RIS-IC is intended to be used by trained health care providers and technicians in a wide variety of healthcare settings including, but not limited to, hospitals, acute care settings, private practices, etc.

Centricity RIS-IC is not intended for use in the diagnosis of disease or other conditions, or in the cure, mitigation, treatment, or prevention of disease.

#### OneView

Centricity OneView (a configuration of Centricity RIS-IC) is intended to manage an enterprise's clinical imaging workflow by providing a global interpretation worklist. Through this worklist, a clinician can access a complete historical record of a patient's exams and images from multiple RIS and PACS environments. Centricity OneView also provides worklists to manage technologist workflow and referring provider access. In addition, Centricity OneView provides integration, report management, and manages and moves images and data between disparate systems.

The Centricity OneView system can be used in a standalone facility or in a multi-facility setting with several radiology departments. Centricity OneView is intended to interface with various Electronic Medical Record Systems (EMR), HIS, LIS, RIS, PACS, etc. Centricity OneView is intended to be used by trained health care providers and technicians in a wide variety of healthcare settings including, but not limited to, hospitals, acute care settings, private practices, etc.

## Chapter 2 Safety

Centricity OneView is not standalone RIS nor is it considered the system of record. Centricity OneView is not intended for image storage, display, or communication. Centricity OneView is not intended for use in the diagnosis of disease or other conditions, or in the cure, mitigation, treatment, or prevention of disease.

## 2.2 Terminology

The terms danger, warning, and caution are used throughout this manual to point out hazards and to designate a degree or level of seriousness. Familiarize yourself with their definitions and significance.

Hazard is defined as a source of potential injury to person.

Term	Description
Danger	Indicates an imminently hazardous situation which, if not avoided, <b>will</b> result in death or serious injury.
Warning	Indicates a potentially hazardous situation, which, if not avoided, <b>could</b> result in death or serious injury.
Caution	Indicates a potentially hazardous situation, which, if not avoided, <b>may</b> result in minor or moderate injury.
Note	Indicates informational messages providing application tips or other useful information that do not pertain to a hazard.

## 2.3 System Safety

Centricity software applications aid in the delivery of healthcare by assisting authorized personnel in their daily workflow and by providing information to qualified providers so they can interpret appropriately.

To ensure proper use of the system, users should read the product manuals and receive training. Certain sections of the product are of particular importance and can pose a potential problem if not properly used.

If you do not understand these responsibilities, warnings, and statements, or how they affect you, contact your application manager or the ROC.

### Your Responsibilities

When you, the customer, encounter a potential problem with the system, you need to report the issue to GE Healthcare in a timely fashion. The action you take depends on your role: end user, application manager, or system manager.

The table that follows describes the action to take based on your role.

## Chapter 2 Safety

Role	Action
End user	<ol style="list-style-type: none"> <li>1) Record the accession or document identification number related to the problem, a description of the problem, and the workflow steps taken when the problem was encountered.</li> <li>2) Contact your application manager immediately.</li> </ol>
Application manager	<ol style="list-style-type: none"> <li>1) Contact the ROC to report the problem and accession number or document id number.</li> <li>2) Notify all users to stop using the affected function immediately.</li> <li>3) Carefully scan all suspect patient and exam/report records for problems.</li> </ol>
System manager	<ol style="list-style-type: none"> <li>1) Identify any recent system modifications that may have caused the issue.</li> <li>2) Contact the ROC to report the problem and communicate information about any recent system modifications.</li> <li>3) Notify users affected by the issue and provide guidance on interim measures to take until situation is resolved.</li> </ol>

### GE Healthcare Responsibilities

Once GE Healthcare is contacted about a potential issue, we will do our best to resolve it in a timely manner. GE Healthcare performs the following steps when notified of an issue regarding a potential issue:

- 1) GE Healthcare determines the nature of the reported problem by attempting to recreate the problem at GE Healthcare.
- 2) If it is determined that no problem exists, the organization is advised to resume normal procedures. GE Healthcare carefully documents all steps taken.
- 3) If it is determined that a problem exists (that is, the problem reported is not due to user error), GE Healthcare advises the appropriate person (either the application manager or system manager, depending on the problem) of the proper steps to take.
- 4) GE Healthcare resolves the issue and carefully documents all steps taken.
- 5) GE Healthcare notifies the appropriate person (either the application manager or system manager, depending on the problem) that users can resume using the affected function.

## 2.4 Dangers

There are no dangers that refer to the equipment in general. Specific "Danger" statements may be given in the respective sections of this manual.



## 2.5 Warnings

### General Warnings

**Warning:** Certain sections of the application can pose a potential problem if not properly used. To ensure proper use of the application, users should read the product documentation and receive training.

**Warning:** Incorrect configuration of the system may result in incorrect or missing clinical data essential for patient care. To ensure that the system is usable and functions correctly, configure the system according to the *System Environment Specifications*. To set Internet Explorer correctly, refer to the *Microsoft Internet Explorer Settings*. These documents are available on the customer web at the following URL: [https://www2.gehealthcare.com/us/maintenance\\_support/maintenance\\_offerings/ch.ris\\_documentation.octonary](https://www2.gehealthcare.com/us/maintenance_support/maintenance_offerings/ch.ris_documentation.octonary).

Incorrect setup of the application (such as the system setup switches, dictionaries, or security system) may result in incorrect or missing clinical data essential for patient care. To ensure that the system is usable and functions correctly, the application must be set up according to the supplied documentation.

**Warning:** Customers must set up and maintain hardware according to the applicable standards listed in the Certifications section.

**Warning:** Your institution may choose to not send or store information about the patient's allergies in the system. If there is no allergy information for the specified patient in the system, the system indicates that there are no active allergy records on file for the specified patient and displays "Allergies: Unknown" in the patient banner. However, the patient may have allergies and the user is responsible for verifying the patient's allergies, either with the patient or in the system of record for allergy information.

### General Worklist Warnings

**Warning:** Users can link multiple (two or more) exams that already have associated images. When this action is performed, ownership of the images is combined in the database. That is, once exams are linked, all images belong to the linked set, and no longer refer to the specific exam with which the images were originally associated (the database does not retain information regarding the exam to which images originally belonged). This results in difficulty unlinking the exams. If a user unlinks one of the exams, all images stay associated with the remaining linked exams.

For example, study 1.2.3 belongs to exam A. Study 4.5.6 belongs to exam B. A user links exams A and B. Both studies 1.2.3 and 4.5.6 now point to the combined linked set of exams A and B in the database. Later, a user unlinks exam B. Both studies 1.2.3 and 4.5.6 remain associated with exam A. There are now no images associated with exam B. This is a potential issue, because study 4.5.6 originally belonged to exam B.

To restore images to their original exams, perform the following steps:

- 1) Identify the exams and images in question.
- 2) Identify the accession number(s) to which the images were originally associated.
- 3) Access the Digital Image Management option and detach the images from the exam as appropriate. The associated images become exceptions and appear in the Exceptions Handler.

## Chapter 2 Safety

- 4) Access the Exceptions Handler option and resolve each image exception by attaching it to the correct accession number.

### Auto-Merge Warnings

**Warning:** The Auto-Merge feature allows patient records to be automatically merged based on an inbound ADT interface message. The rules for the automated action follow predefined logic to determine what data is filed on the surviving patient record and what data is discarded. GE Healthcare Services enables the interface and assists you in the setup of your interface preference(s) (for example, to set up specific interfaces to allow or to not allow the auto-merge, as desired). Customers should understand the logic of the merge and be cautious in the setup of the interfaces to accept data only from their system(s) of record. There is no capability to unmerge patient records that have been automatically merged.

### Exam Memos Warnings

**Warning:** Exam memos are intended for communication purposes only and are not to be used for diagnostic purposes.

### Referring Provider Worklist Warnings

**Warning:** The Referring Provider Worklist is intended for review and consultation only and is not to be used for diagnostic purposes. This is because GE Healthcare cannot control or specify the capabilities of your computer (for example, the monitor resolution and the video card). Consequently, it is possible that your computer could, for example, misrepresent a downloaded image.

### Registration Warnings

**Warning:** Visually verify the patient records you want to merge before performing the merge function.

**Warning:** If you are using Centricity RIS-IC in conjunction with a hospital information system (HIS), always merge the patient records in the HIS before merging the records in Centricity RIS-IC. Patient records merged in the HIS then appear as merge candidates in the Merge Candidates List option or are automatically merged if the Auto-Merge feature is enabled. Merging patient records in Centricity RIS-IC before merging them in the HIS may result in a merge interface error.

### Worklist Module PACS-Related Warnings

**Warning:** Mixed-mode workflows are not supported. That is, a RIS-driven workflow or a PACS-driven workflow is supported, not a combination of the two. If a mixed-mode workflow is used, clinical information from the RIS and images from the PACS might become unsynchronized. To avoid context sharing problems, use a RIS-driven or a PACS-driven workflow exclusively.

**Warning:** This warning pertains only to the use of Centricity RIS-IC/Centricity OneView with Centricity PACS. Both applications allow users to define default display protocols (DDPs). The active DDP in Centricity PACS takes precedence over the Centricity RIS-IC/Centricity OneView filter/folder settings that pertain to DDPs. Depending on the active DDP in the PACS, the PACS might hang images for related exams differently than Centricity RIS-IC/Centricity OneView rules and settings for hanging images would otherwise dictate. Providers should always be aware of the PACS DDP when interpreting images to avoid a delay in care or incorrect treatment.

## 2.6 Cautions

**Caution:** Customers must set up and maintain hardware according to the electromagnetic compatibility recommendations listed in EMC: Immunity Performance.

## 2.7 EMC: Immunity Performance

Users should be aware of known RF sources, such as radio or TV stations and hand held or mobile two-way radios, and consider them when installing a medical device or system.

Be aware that adding accessories or components, or modifying the medical device or system may degrade the EMI performance. Consult with qualified personnel regarding changes to the system configuration.

### EMC Recommendations

Per the requirements of 47 CFR 15, if this equipment is found to cause interference (which may be determined by turning the equipment on and off), the user (or qualified service personnel) should attempt to correct the problem by one or more of the following measure(s):

- Reorient or relocate the affected device(s)
- Increase the separation between the equipment and the affected device
- Power the equipment from a source different from that of the affected device
- Consult the point of purchase or service representative for further suggestions

## 2.8 Certifications

The Centricity hardware meets the requirements of the following:

- IEC 60950-1: Information technology equipment - Safety - Part 1: General requirements
- IEC CISPR 22: Information technology equipment - Radio disturbance characteristics - Limits and methods of measurement

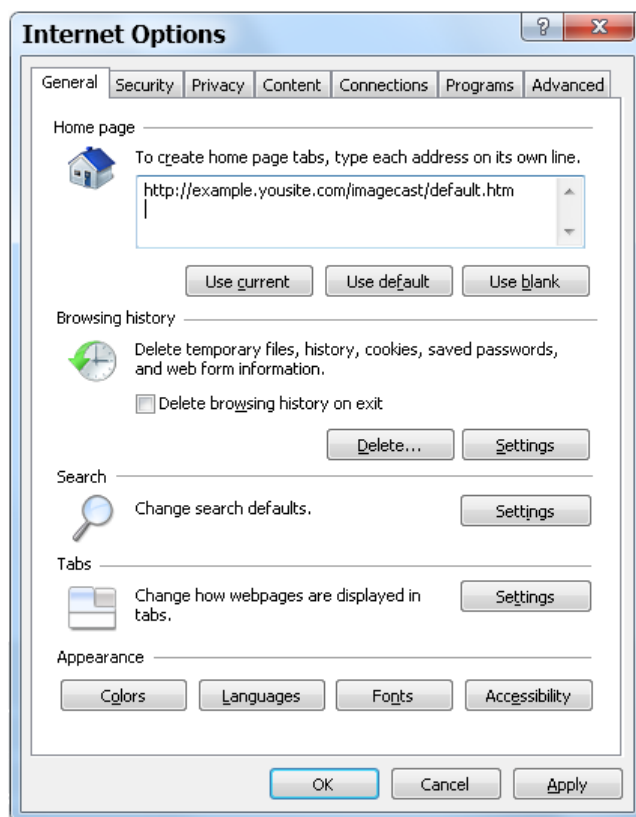
# Internet Explorer (IE) 9 Settings

## 3.1 Defining Browser Settings for IE 9

The following settings are required. All other settings not specified in this document are optional.

1. On the top right corner in Internet Explorer, click the **gear** icon, then click **Internet Options**.

The Internet Options window is displayed.



2. To define the application as your web browser home page, enter the address (URL) for the application in the Home page section of the General tab. You must include "default.htm" in the URL. For example: **http://server name/imagecast/default.htm**, where server name is the name of the Web Server.
3. In the Browsing history section, click **Settings**.  
The Temporary Internet Files and History Settings window is displayed.
4. At the **Check for newer versions of stored pages** prompt, select **Every time I start Internet Explorer**.
5. In the **Disk space to use** field, enter **250 MB**. **Note:** Depending on their usage of the application, some users may require more space.
6. Click **OK**.
7. In the Tabs section of the Internet Options window, click **Settings**.  
The Tabbed Browsing Settings window is displayed.

## Chapter 3 Internet Explorer (IE) 9 Settings

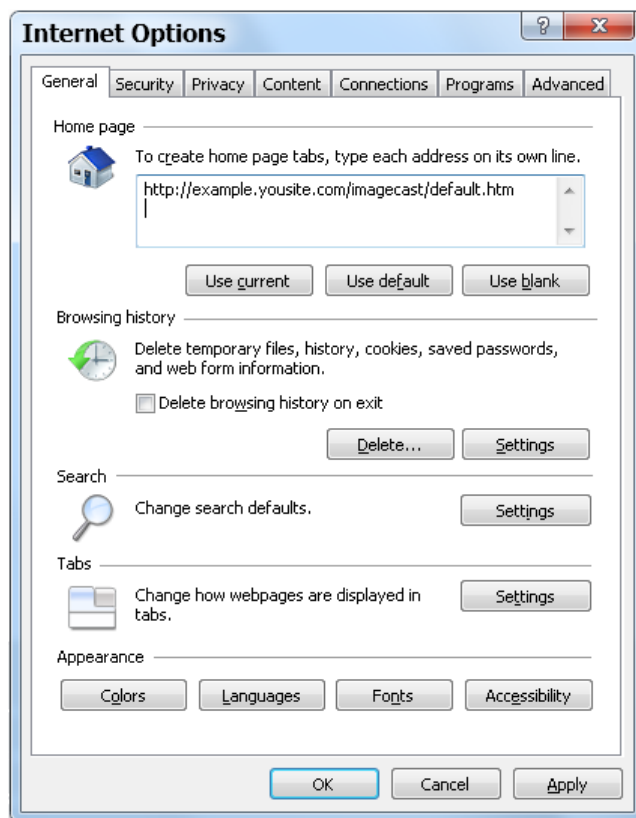
8. In the **When a pop-up is encountered:** setting, select **Always open pop-ups in a new window**.
9. Click **OK**.
10. On the Internet Options window, click the **Advanced** tab.
11. Scroll to the HTTP 1.1 settings section and ensure that **Use HTTP 1.1** and **Use HTTP 1.1 through proxy connections** are checked.
12. Click **OK**.

## 3.2 Defining Security Settings in IE 9

The following settings are required. All other settings not specified are optional.

1. On the top right corner in Internet Explorer, click the **gear** icon, then click **Internet Options**.

The Internet Options window is displayed.



2. Click the **Security** tab.
3. On the **Select a zone to view or change security settings** panel, click **Trusted Sites**.

## Chapter 3 Internet Explorer (IE) 9 Settings



4. Click **Sites**.
5. If your site uses server verification (https:), make sure the **Require server verification (https:) for all sites in this zone** check box is checked; otherwise, make sure it is not checked.
6. In the **Add this Website to the zone** field, enter the URL(s) of the web server and the Connectivity Module server. For example: **http://server name**.
7. Click **Add**.
8. Click **Close**.
9. On the **Security level for this zone** panel, click **Custom level**.
10. In the **ActiveX controls and plug-ins** section, locate the **Allow Scriptlets** setting and select **Enable**.  
If this setting is disabled, the Connectivity Module's calendar control will not function properly.
11. To be able to download controls, do the following:
  - In the **ActiveX controls and plug-ins** section, locate the **Automatic prompting for ActiveX controls** setting and select **Enable**.  
**Note** If this setting is disabled, users will not be able to download ActiveX controls from modal dialog windows.
  - In the **ActiveX controls and plug-ins** section, locate the **Download signed ActiveX controls** setting and select **Enable**.
12. In the **ActiveX controls and plug-ins** section, locate the **Binary and script behaviors** setting and ensure that **Enable** is selected.  
This setting is enabled by default; however, changing the setting to any other selection interferes with the display of the Results Reporting window when it is launched from the Exams worklist.
13. In the **Miscellaneous** section, locate the **Allow script-initiated windows without size or position constraints** setting and select **Enable**.  
If this setting is disabled, the Always on Top user preference will not function, causing windows such as the Help or the Document Management Solution to open behind other Centricity windows.
14. In the **Miscellaneous** section, locate the **Use Pop-up Blocker** setting and select **Disable**.  
Alternatively, select **Enable** for this setting and add the application site to the allowed sites on the Privacy tab.
15. In the **Miscellaneous** section, locate the **Userdata persistence** setting and select **Enable**.

If this setting is disabled, users will be unable to acquire documents into the Document Management Solution.

## Chapter 3 Internet Explorer (IE) 9 Settings

16. In the **Scripting** section, locate the **Allow Programmatic clipboard access** setting and select **Enable**.  
If this setting is disabled, users will receive an additional prompt when accessing a context-sensitive pop-up menu or window.
17. On the Security Settings window, click **OK**.
18. When prompted to verify the changes to your security settings, click **Yes**.
19. Click the **Privacy** tab.



20. Move the slider to select the medium privacy setting.
21. Click **OK**.

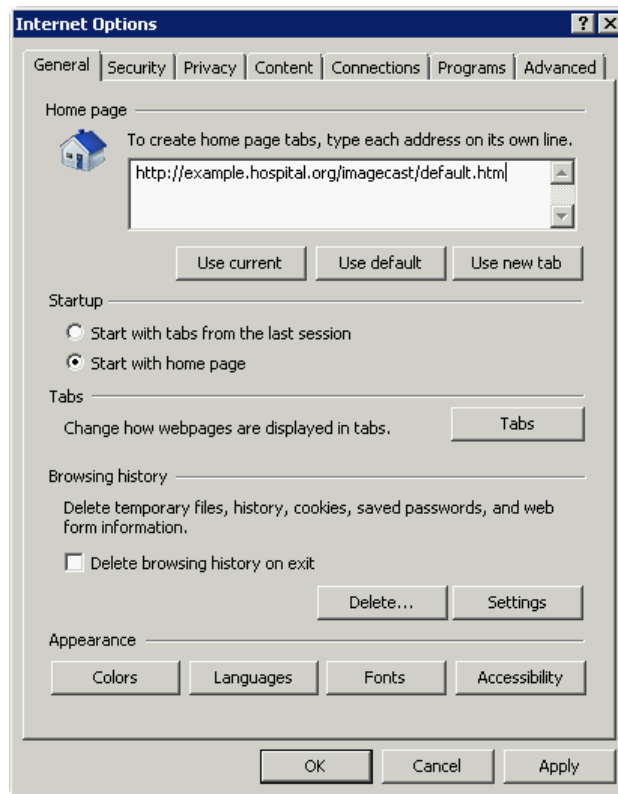
# Internet Explorer (IE) 11 Settings

## 4.1 Defining Browser Settings for IE 11

The following settings are required. All other settings not specified in this document are optional.

1. On the top right corner in Internet Explorer, click the **gear** icon, then click **Internet Options**.

The Internet Options window is displayed.



2. To define the application as your web browser home page, enter the address (URL) for the application in the Home page section of the General tab. You must include "default.htm" in the URL. For example: **http://server name/imagecast/default.htm**, where server name is the name of the Web Server.
3. In the Browsing history section, click **Settings**.  
The Temporary Internet Files and History Settings window is displayed.
4. At the **Check for newer versions of stored pages** prompt, select **Every time I start Internet Explorer**.
5. In the **Disk space to use** field, enter **250 MB**. **Note:** Depending on their usage of the application, some users may require more space.
6. Click **OK**.
7. In the Tabs section of the Internet Options window, click **Tabs**.  
The Tabbed Browsing Settings window is displayed.



## Chapter 4 Internet Explorer (IE) 11 Settings

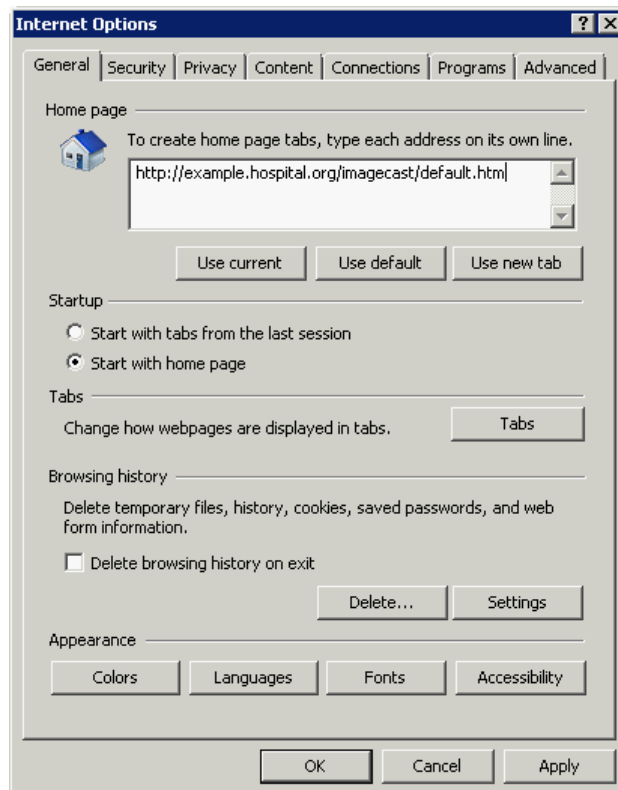
8. In the **When a pop-up is encountered:** setting, select **Always open pop-ups in a new window**.
9. Click **OK**.
10. On the Internet Options window, click the **Content** tab.
11. On the AutoComplete section, click **Settings**.  
The AutoComplete Settings window is displayed.
12. Deselect **Forms**.
13. Deselect **User names and passwords on forms**.
14. Click **OK**.
15. On the Internet Options window, click the **Advanced** tab.
16. Scroll to the HTTP 1.1 settings section and ensure that **Use HTTP 1.1** and **Use HTTP 1.1 through proxy connections** are checked.
17. Click **OK**.

## 4.2 Defining Security Settings in IE 11

The following settings are required. All other settings not specified are optional.

1. On the top right corner in Internet Explorer, click the **gear** icon, then click **Internet Options**.

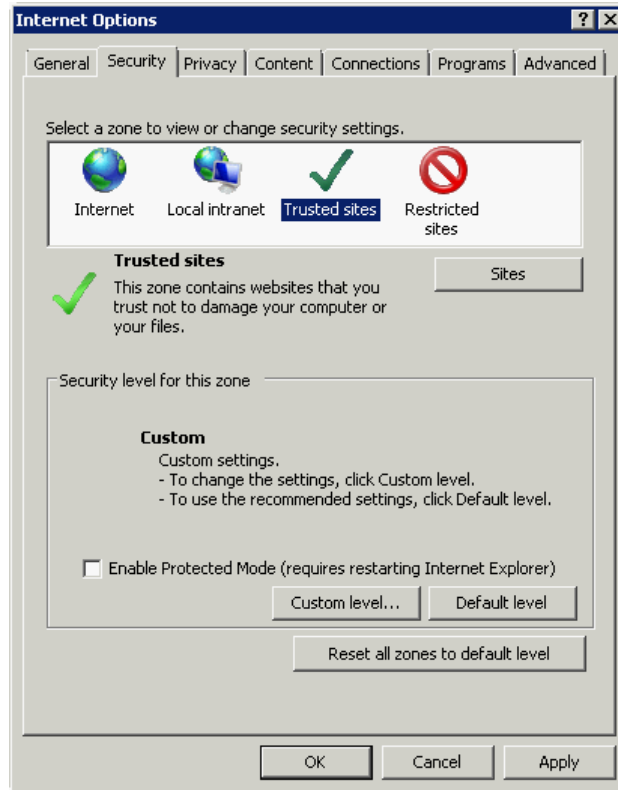
The Internet Options window is displayed.



2. Click the **Security** tab.

## Chapter 4 Internet Explorer (IE) 11 Settings

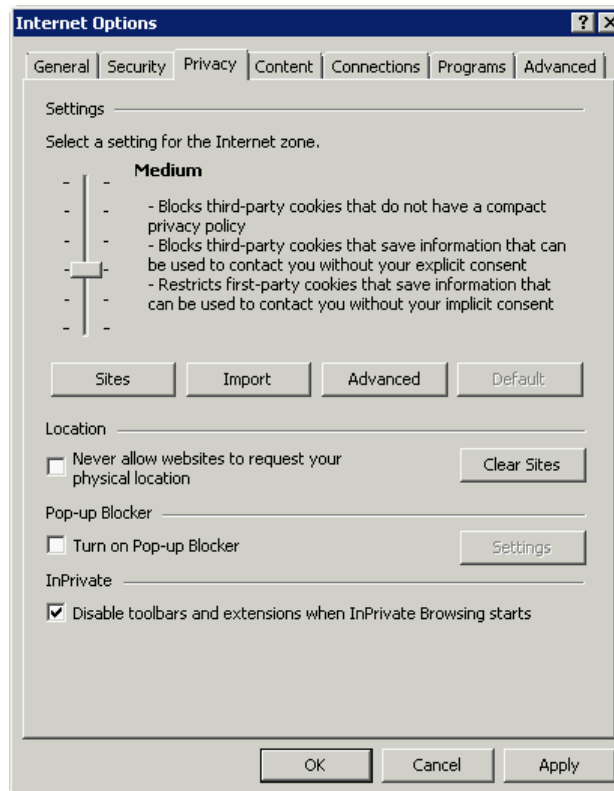
3. On the **Select a zone to view or change security settings** panel, click **Trusted Sites**.



4. Click **Sites**.
5. If your site uses server verification (https:), make sure the **Require server verification (https:) for all sites in this zone** check box is checked; otherwise, make sure it is not checked.
6. In the **Add this Website to the zone** field, enter the URL(s) of the web server and the Connectivity Module server. For example: **http://server name**.
7. Click **Add**.
8. Click **Close**.
9. On the **Security level for this zone** panel, click **Custom level**.
10. In the **ActiveX controls and plug-ins** section, locate the **Allow Scriptlets** setting and select **Enable**.  
If this setting is disabled, the Connectivity Module's calendar control will not function properly.
11. To be able to download controls, do the following:
  - In the **ActiveX controls and plug-ins** section, locate the **Automatic prompting for ActiveX controls** setting and select **Enable**.  
**Note** If this setting is disabled, users will not be able to download ActiveX controls from modal dialog windows.
  - In the **ActiveX controls and plug-ins** section, locate the **Download signed ActiveX controls** setting and select **Enable**.
12. In the **ActiveX controls and plug-ins** section, locate the **Binary and script behaviors** setting and ensure that **Enable** is selected.  
This setting is enabled by default; however, changing the setting to any other selection interferes with the display of the Results Reporting window when it is launched from the Exams worklist.

## Chapter 4 Internet Explorer (IE) 11 Settings

13. In the **Miscellaneous** section, locate the **Allow script-initiated windows without size or position constraints** setting and select **Enable**.  
If this setting is disabled, the Always on Top user preference will not function, causing windows such as the Help or the Document Management Solution to open behind other Centricity windows.
14. In the **Miscellaneous** section, locate the **Use Pop-up Blocker** setting and select **Disable**.  
Alternatively, select **Enable** for this setting and add the application site to the allowed sites on the Privacy tab.
15. In the **Miscellaneous** section, locate the **Userdata persistence** setting and select **Enable**.  
If this setting is disabled, users will be unable to acquire documents into the Document Management Solution.
16. In the **Scripting** section, locate the **Allow Programmatic clipboard access** setting and select **Enable**.  
If this setting is disabled, users will receive an additional prompt when accessing a context-sensitive pop-up menu or window.
17. On the Security Settings window, click **OK**.
18. When prompted to verify the changes to your security settings, click **Yes**.
19. Click the **Privacy** tab.



20. Move the slider to select the medium privacy setting.
21. Click **OK**.

**GE Healthcare**  
gehealthcare.com



Corporate Headquarters  
GE Healthcare  
540 West Northwest Highway  
Barrington, IL 60010 USA  
Tel: +1 847 277 5000  
Fax: +1 847 277 5240

